

THE
TOURNUS
ASSET

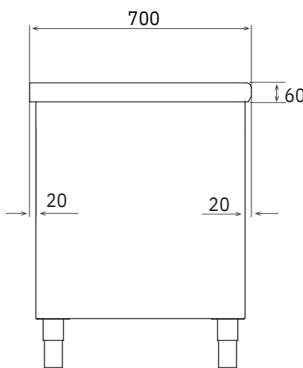
Heating system ensuring even temperature distribution inside units with holding of product core temperature greater than 63° C for over 2 hours.

Standard units only. Units with ventilated heated interior. Stainless steel construction. Adjustable height 900 to 950 mm.

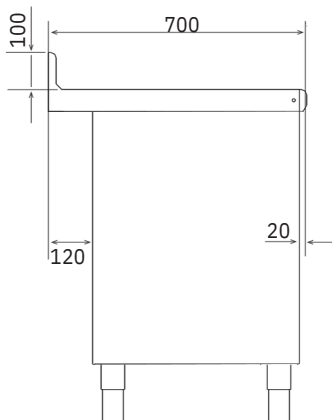
Reinforced inner pannels. Legs Ø 60 mm with jacks. Sliding doors reinforced. One adjustable shelf. Electrical connection terminal in the technical compartment (cable not included).

With heated interior and worktop

Power 3550 W. Voltage : 400 V - 3N ~ + PE



Width 700 mm without upstand



Width 700 mm with upstand



Overall dim. W x l (mm)	Central unit with sliding doors on 1 side	Unit with upstand and sliding doors on 1 side	Central unit with sliding doors on 2 sides
	Ref.	Ref.	Ref.
700 × 1200	804 675	824 675	804 685
700 × 1400	804 676	824 676	804 686
700 × 1600	804 677	824 677	804 687
700 × 1800	804 678	824 678	804 688
700 × 2000	804 679	824 679	804 689

With heated interior

Power 2050 W. Tension : 230 V - 1N ~ + PE

Overall dim. W x l (mm)	Central unit with sliding doors on 1 side	Unit with upstand and sliding doors on 1 side	Central unit with sliding doors on 2 sides
	Ref.	Ref.	Ref.
600 × 1200	504 675	524 675	504 685
600 × 1400	504 676	524 676	504 686
600 × 1600	504 677	524 677	504 687
700 × 1200	504 655	524 655	504 665
700 × 1400	504 656	524 656	504 666
700 × 1600	504 657	524 657	504 667
700 × 1800	504 658	524 658	504 668
700 × 2000	504 659	524 659	504 669

Extras for heated units

Description	Reference
Lock on heated units (1)	118 882
4 Stainless steel wheels Ø 125 mm including 2 brakes	701 778

(1) Delivery in kit form, to assemble.

Shelves for heated units

Stainless steel shelf units, shelves 1,5 mm thick, columns 38 mm with curved based. Heating method : by radiation under the surface for infra red and halogen shelves, resistance in top part for the other models.

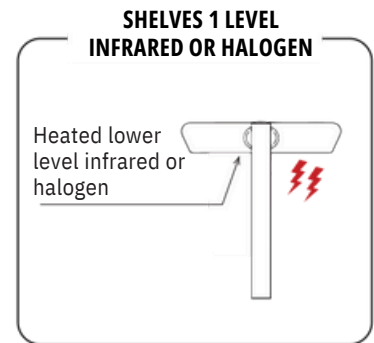
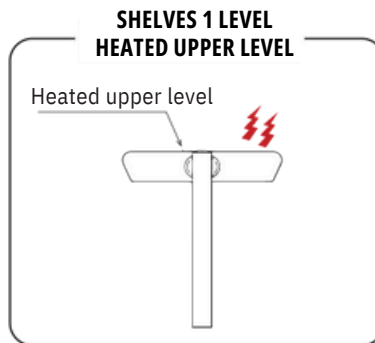
These shelves are made for Tournus units only. The shelves positioning requires an adaptation on the unit (specially made worktop), (top with fitting), on/off switch on control panel. Therefore, these shelves have to be ordered together with the unit.



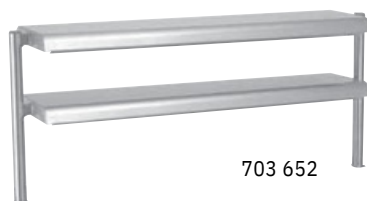
703 602

1 LEVEL

Depth 320 mm, height 360 mm.



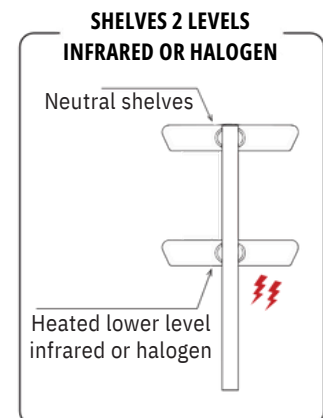
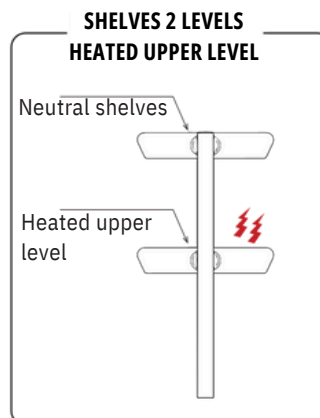
Shelves 1 level for units of length (mm)	Neutral shelves	Heated shelves		Infrared shelves		Halogen shelves	
	Ref.	Ref.	Power (W)	Ref.	Power (W)	Ref.	Power (W)
1200	703 601	703 611	300	703 621	500	703 631	600
1400	703 602	703 612	600	703 622	750	703 632	900
1600	703 603	703 613	600	703 623	1000	703 633	1200
1800	703 604	703 614	600	703 624	1000	703 634	1200
2000	703 605	703 615	600	703 625	1250	703 635	1500



703 652

2 LEVELS

Depth 320 mm, height 630 mm. Neutral upper level.



Shelves 2 levels for units of length (mm)	With neutral lower level	With heated lower level		With infrared lower level		With halogen lower level	
	Ref.	Ref.	Power (W)	Ref.	Power (W)	Ref.	Power (W)
1200	703 651	703661	300	703 671	500	703 681	600
1400	703 652	703662	600	703 672	750	703 682	900
1600	703 653	703663	600	703 673	1000	703 683	1200
1800	703 654	703664	600	703 674	1000	703 684	1200
2000	703 655	703665	600	703 675	1250	703 685	1500

Special adaptation on existing unit:

- Fixing plate for adaptation to existing unit- ref : 703599
- Switch for shelves with energy (*), ref : 703600

(*) The switch is fixed to an upright of the shelf

25 avenue Jean Moulin - CS2005
71700 TOURNUS - FRANCE
RC Mâcon B 383 567 104
Code APE 295 E
SAS Capital 16 355 625€

FRANCE
Tel : 03 85 27 42 00
E-mail : commercial@tournus.com

EXPORT
Tel : + 33 (0)3 85 27 42 65
E-mail : export@tournus.com